

Highlights:

- ❖ SODIMM easy detachable
- ❖ Advance security features
- ❖ Technical and customization support
- ❖ Cost effective and power efficient
- ❖ REACH and ROHS certified
- ❖ 10+ years, long term support

TRUX-iMX6UL-D01 CPU module is based on iMX6ULtraLite processor, which is a high performance, ultra-efficient single ARM Cortex®-A7 core, operates at speeds up to 528 MHz. Its **1.0mm pitch SODIMM 200-pin** is easy to detach and useful in general embedded design. It is cost effective and power efficient. It offers a wide range of interfaces such as **GPIOs, industry-standard I2C, I2S, CAN, and UART buses, high speed USB 2.0 interfaces, SD-card, camera interface and ethernet.**

With a choice G2 and G3 subfamily processors running at 528 MHz and integrated with 256MB DDR3 and 256MB NAND flash extended up to 1GB, the TRUX-iMX6UL module delivers high performance that targets electronics Point-of-Sale device, telematics, IoT gateway, access control panels, Human Machine Interfaces (HMI) and smart applications. This G3 sub-family-based module provides advanced security features.

Specifications

Features:

- ❖ CPU: NXP/Freescale iMX6UL ARM Cortex-A7 @528 MHz speed
- ❖ PMIC: NXP/Freescale PF3000

Memory:

- ❖ 256MB DDR3 (Expandable up to 512 MB)
- ❖ 256MB NAND Flash (Expandable up to 1GB)

Power Supply: 3.3V,1A

Supported Temperature:

- ❖ 0°C to +70°C Commercial
- ❖ -40°C to +85°C Industrial

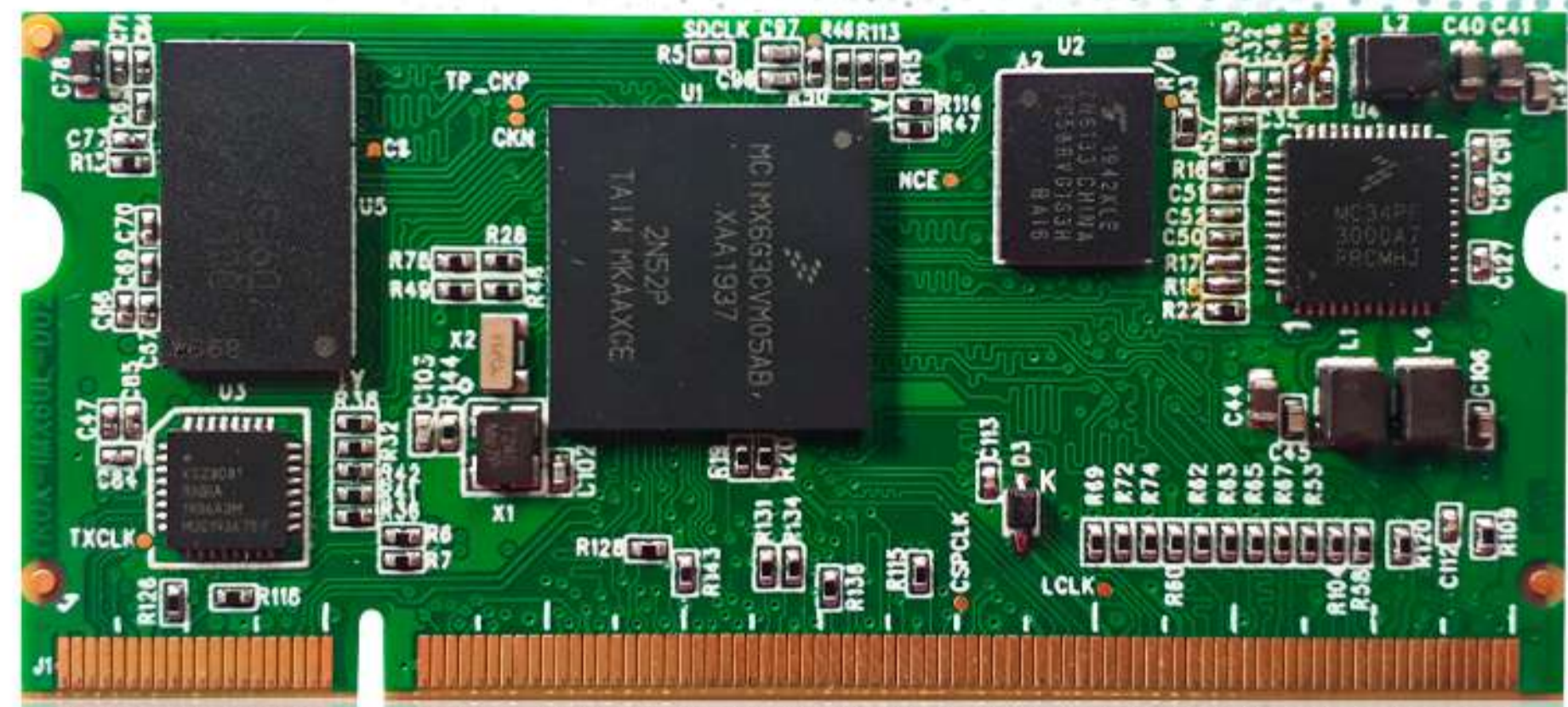
OS Support: Linux 4.1.15

Form Factor: 67.5 mm x 30 mm

- ❖ REACH & RoHS Compliant



- Peripherals:**
- One 10/100M Ethernet PHY
 - Second Ethernet with 10/100 RMII Interface
 - Debug UART x 1
 - DATA UART x 3
 - CANx1Port
 - SD(4-Bit) x 1 Port
 - USBOTGx1Port
 - USB HOST x 1 Port
 - 24 RGB Display Port
 - 8 Bit Parallel camera port
 - I2S Audio
 - I2Cx1Port
 - PWMx1Port
 - GPIOs
 - Boot Mode Signals

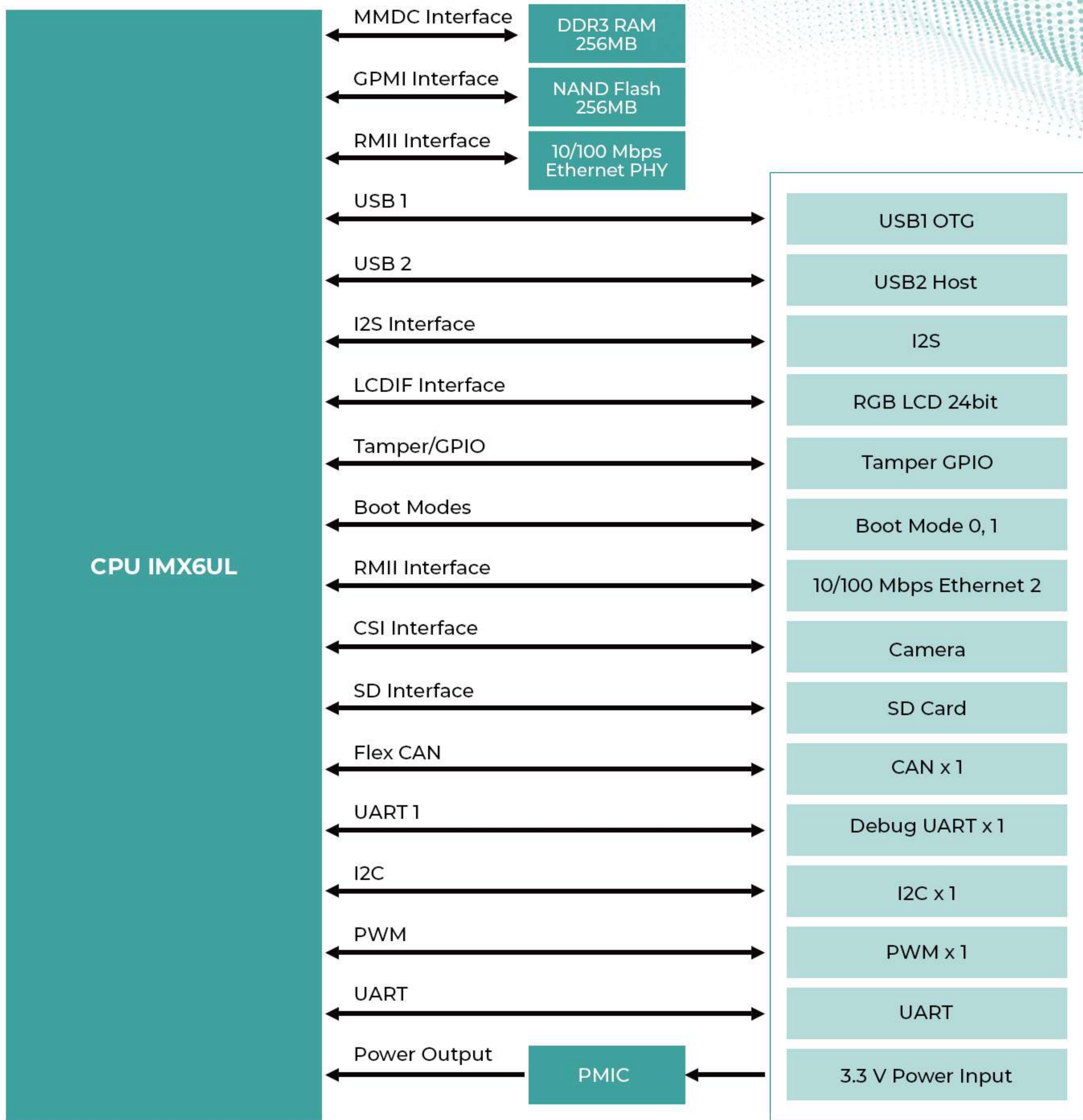


Ordering Information:

Part Number	TRUX-iMX6UL-D01-G3-D256M-N256M-C	TRUX-iMX6UL-D01-G3-D512M-N1G-C	TRUX-iMX6UL-D01-G2-D256M-N256M-C	TRUX-iMX6UL-D01-G2-D512M-N1G-C
Processor	MCIMX6G3DVM05AB	MCIMX6G3DVM05AB	MCIMX6G2DVM05AB	MCIMX6G2DVM05AB
DRAM	256MB	512 MB	256MB	512MB
Flash	256MB	1GB	256MB	1GB
Operating Temperature	0°C to +70°C	0°C to +70°C	0°C to +70°C	0°C to +70°C

Part Number	TRUX-iMX6UL-D01-G3-D256M-N256M-I	TRUX-iMX6UL-D01-G3-D512M-N1G-I	TRUX-iMX6UL-D01-G2-D256M-N256M-I	TRUX-iMX6UL-D01-G2-D512M-N1G-I
Processor	MCIMX6G3CVM05AB	MCIMX6G3CVM05AB	MCIMX6G2CVM05AB	MCIMX6G2CVM05AB
DRAM	256MB	512 MB	256MB	512MB
Flash	256MB	1GB	256MB	1GB
Operating Temperature	-40°C to +85°C	-40°C to +85°C	-40°C to +85°C	-40°C to +85°C

Block Diagram:



TruCrux is an arm of Trunexa, that focuses on developing Next generation Computer on Module / System on Module for low to medium volume projects across various Industries. We develop ARM based small form factor embedded computing platform that includes the most popular and efficient operating system.

Trunexa is a design house that specializes in developing embedded systems, IoT and custom electronics. We provide New product development, Product Modernization and Product support services and help organizations right from requirement identification, development, prototyping, verification to production.